



CUSTOM GALLERIES

# Architectural



## Brookville

This lovely Tudor home has 5 and 6 bedrooms, 4 or 5 full baths and 1 half bath with finished lower level and 3- or 4-car garage. Lots of brick and subtle curves are features that make this classic style both easily recognizable and instantly desirable.

Plan #	Sq Ft.	Master	Price
9050	4275	Upper	\$595000-675000

The Brookville is part of our Architectural Gallery. These plans offer an impressive array of custom designs for those who want a low-maintenance lifestyle that includes luxury features and amenities that add enduring value to your home.





Main Level



Upper Level

# Brookville

**Plan Number:** 9050

**Price:** \$595000-675000

**Square Feet:** 4275

**Master Bedroom:** Upper

**Beds:** 5-6

**Full Baths:** 4-5

**1/2 Baths:** 1

**Lower Level:** Finished

**Garage:** 3-4

## LOWER LEVEL

This home is built with a completely finished lower level with 10 ft. ceilings and individualized custom designs and features.

Lower Level

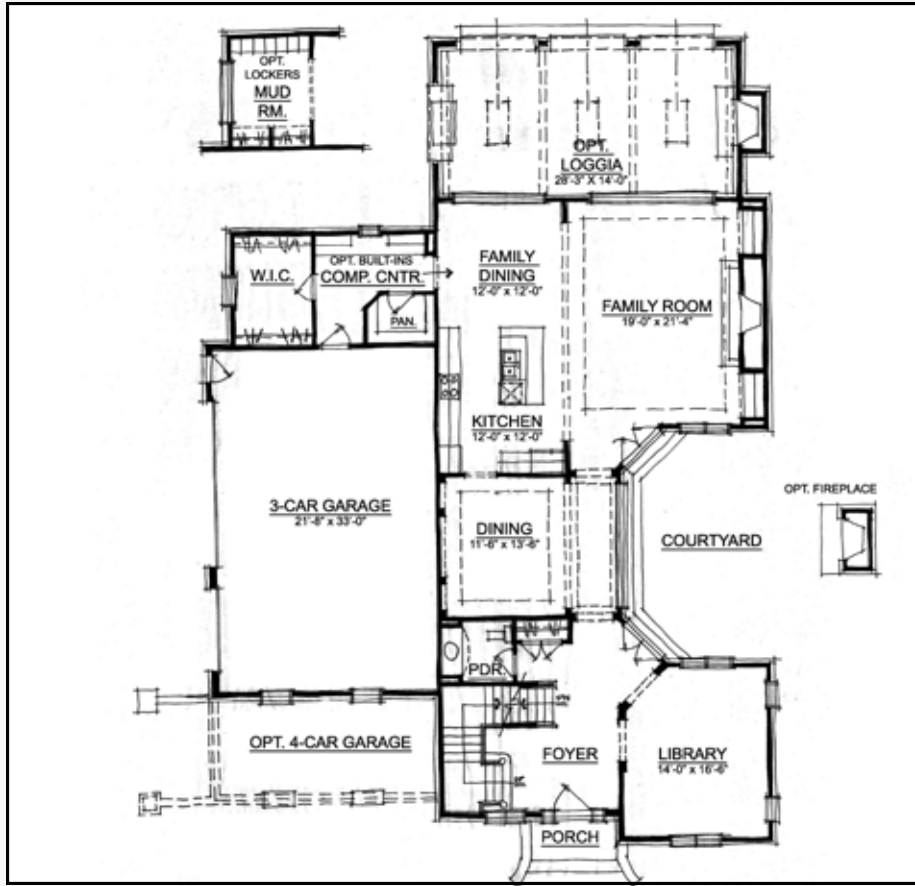
In our continuing effort to meet homebuyer's expectations, we reserve the right to modify features, price, specifications and/or to change or discontinue models without notice or obligation. Floor plan dimensions are approximate. Room dimensions do not include optional bays or box-outs. Floor plan shown may vary from actual home. Ceiling designs vary per elevation. Copyright 2013.



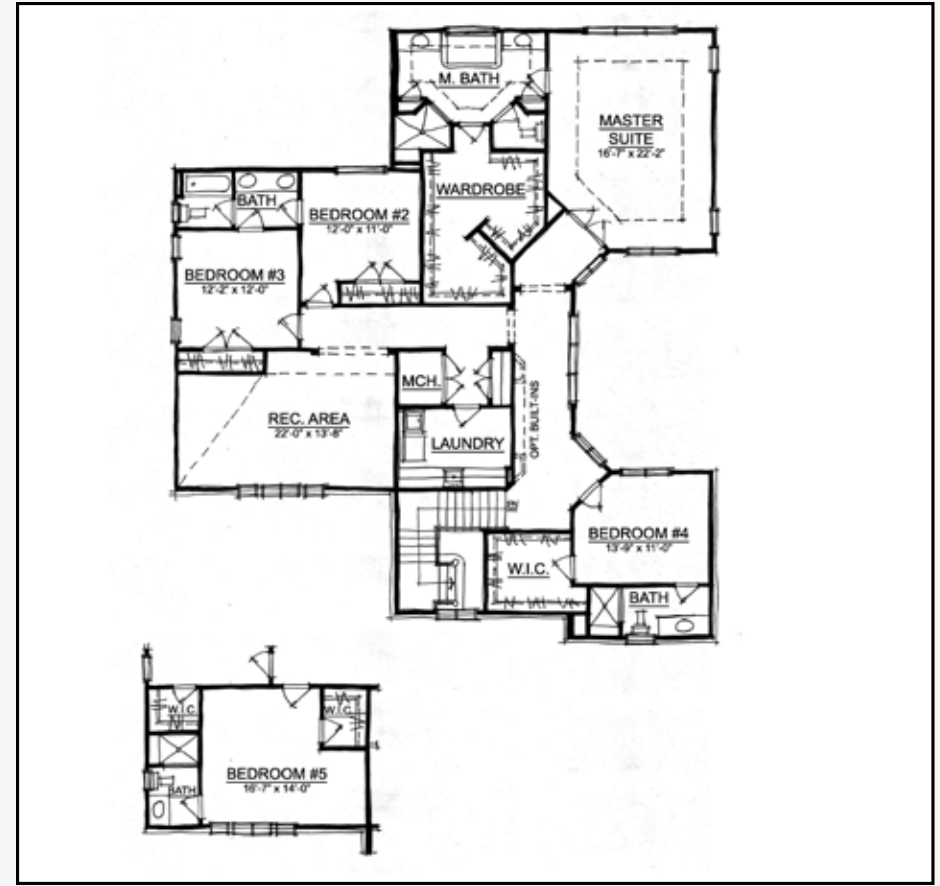
CUSTOM GALLERIES

12965 Old Meridian Street  
 Carmel, IN 46032  
 317.582.2464  
 www.estrledge.com

# Brookville



Main Level



Upper Level

