



CUSTOM GALLERIES

Architectural



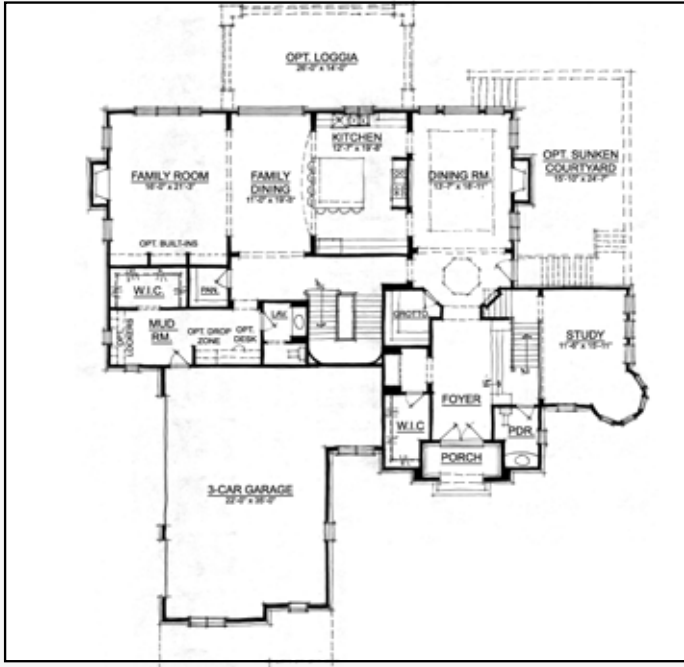
Brightwood

This gorgeous English Manor showcases quintessential British style. With 4-5 bedrooms, 4 and 2 half baths, a finished lower level and 3 - 4 car garage, this home meshes timeless architecture with modern convenience.

Plan #	Sq Ft.	Master	Price
9100	5122	Upper	\$825000-900000

The Brightwood is part of our Architectural Gallery. These plans offer an impressive array of custom designs for those who want a low-maintenance lifestyle that includes luxury features and amenities that add enduring value to your home.





Main Level



Upper Level

Brightwood

Plan Number: 9100

Price: \$825000-900000

Square Feet: 5122

Master Bedroom: Upper

Beds: 4-5

Full Baths: 4

1/2 Baths: 2

Lower Level: Finished

Garage: 3-4

LOWER LEVEL

This home is built with a completely finished lower level with 10 ft. ceilings and individualized custom designs and features.

Lower Level

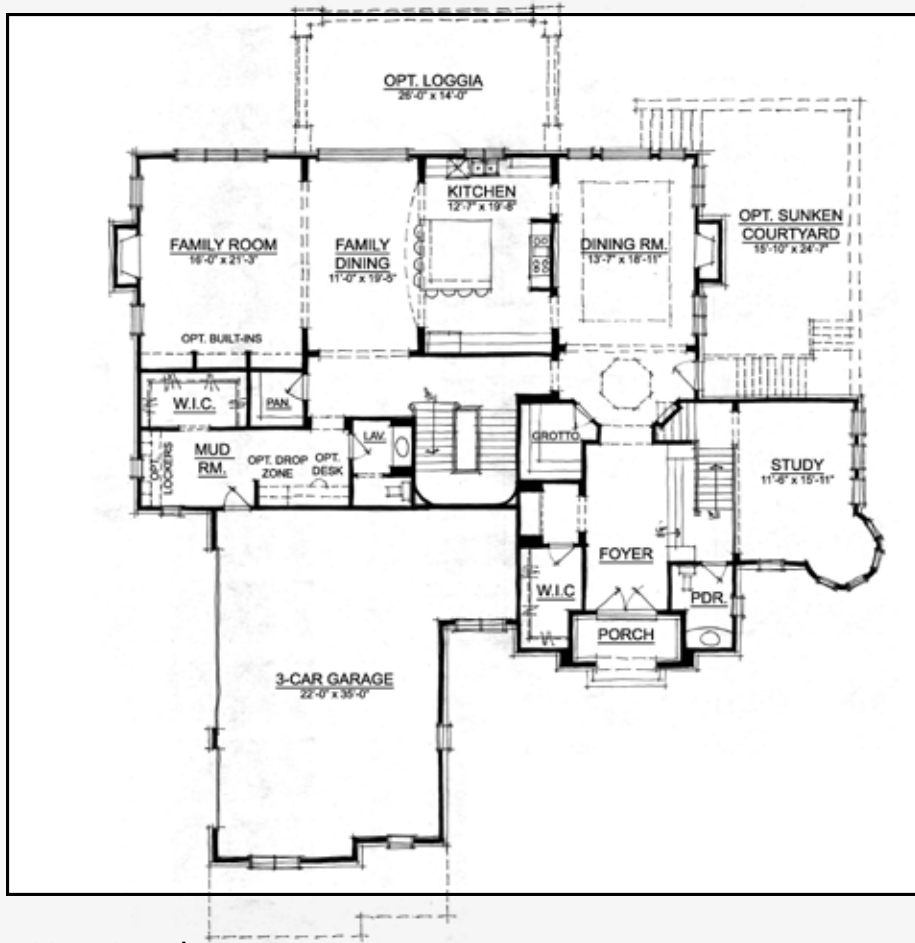
In our continuing effort to meet homebuyer's expectations, we reserve the right to modify features, price, specifications and/or to change or discontinue models without notice or obligation. Floor plan dimensions are approximate. Room dimensions do not include optional bays or box-outs. Floor plan shown may vary from actual home. Ceiling designs vary per elevation. Copyright 2013.



CUSTOM GALLERIES

12965 Old Meridian Street
 Carmel, IN 46032
 317.582.2464
 www.estriddle.com

Brightwood



Main Level



Upper Level



CUSTOM GALLERIES

Architectural