



CUSTOM GALLERIES

Architectural



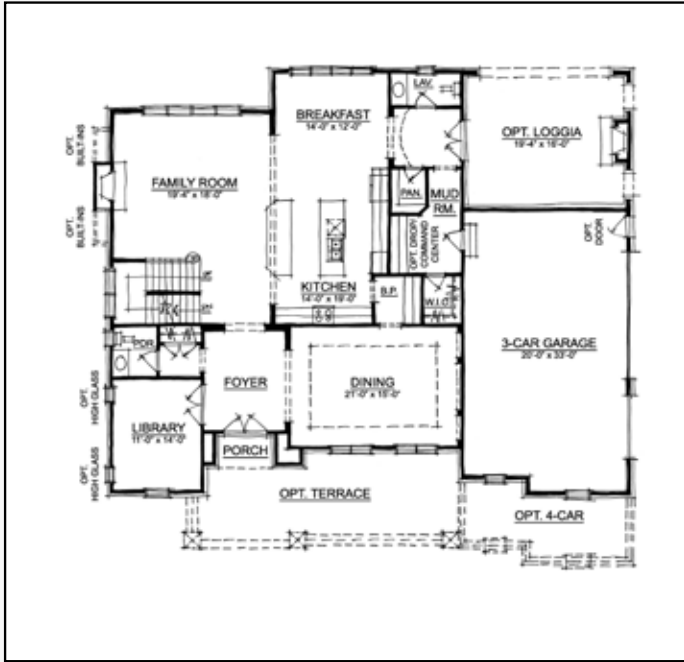
Bloomfield

This English manor home mirrors the grandeur of Meridian-Kessler. With 4 and 5 bedrooms, 4 baths and 2 half baths, finished lower level and a 3- or 4-car garage, this home is designed to deliver an ideal living experience.

Plan #	Sq Ft.	Master	Price
9030	4253	Upper	\$599000-695000

The Bloomfield is part of our Architectural Gallery. These plans offer an impressive array of custom designs for those who want a low-maintenance lifestyle that includes luxury features and amenities that add enduring value to your home.





Main Level



Upper Level

Bloomfield

Plan Number: 9030

Price: \$599000-695000

Square Feet: 4253

Master Bedroom: Upper

Beds: 4-5

Full Baths: 4

1/2 Baths: 2

Lower Level: Finished

Garage: 3-4

LOWER LEVEL

This home is built with a completely finished lower level with 10 ft. ceilings and individualized custom designs and features.

Lower Level

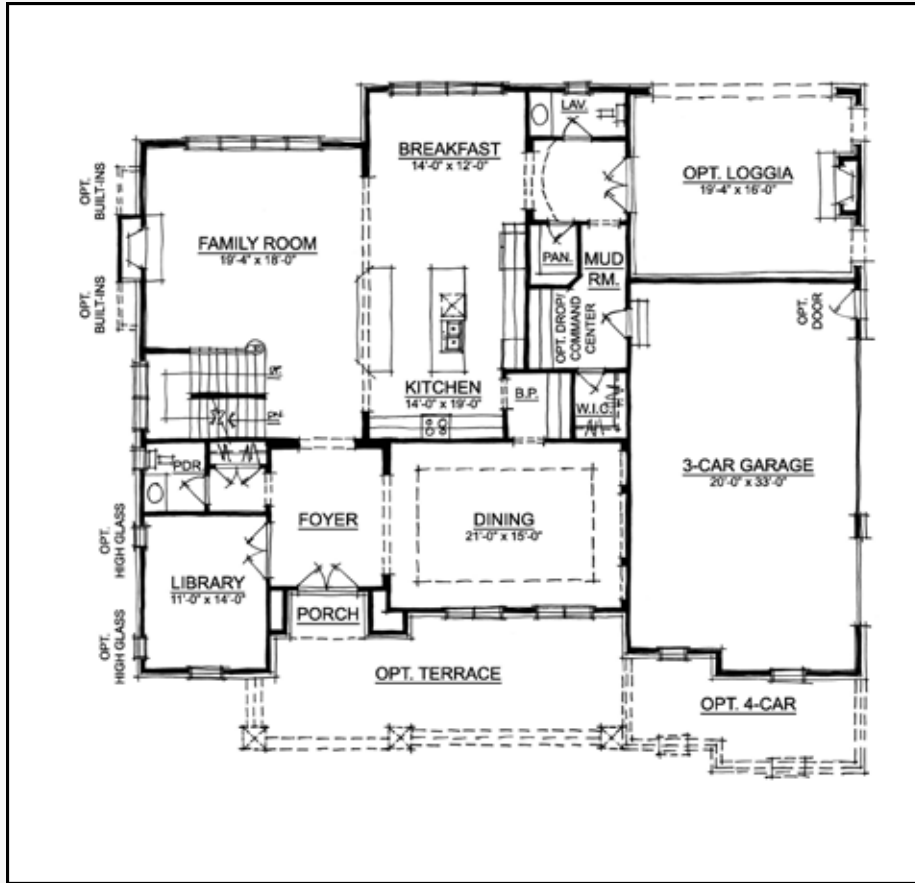
In our continuing effort to meet homebuyer's expectations, we reserve the right to modify features, price, specifications and/or to change or discontinue models without notice or obligation. Floor plan dimensions are approximate. Room dimensions do not include optional bays or box-outs. Floor plan shown may vary from actual home. Ceiling designs vary per elevation. Copyright 2013.



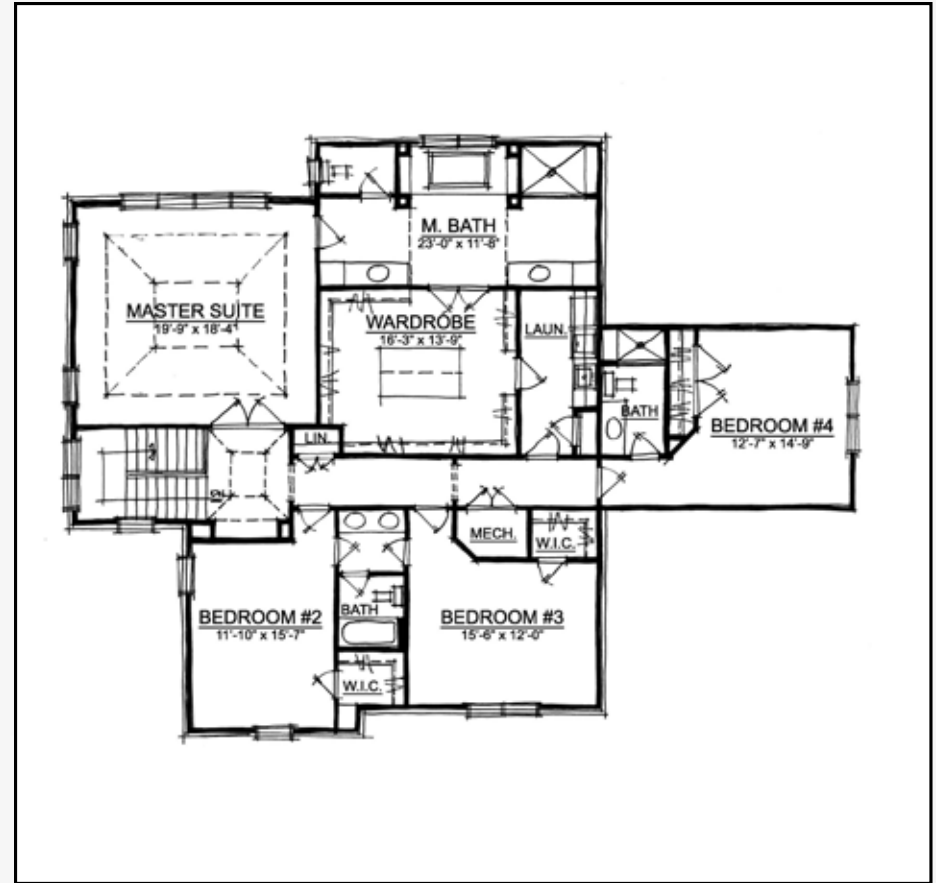
CUSTOM GALLERIES

12965 Old Meridian Street
 Carmel, IN 46032
 317.582.2464
 www.estrledge.com

Bloomfield



Main Level



Upper Level

