



CUSTOM GALLERIES

# Architectural



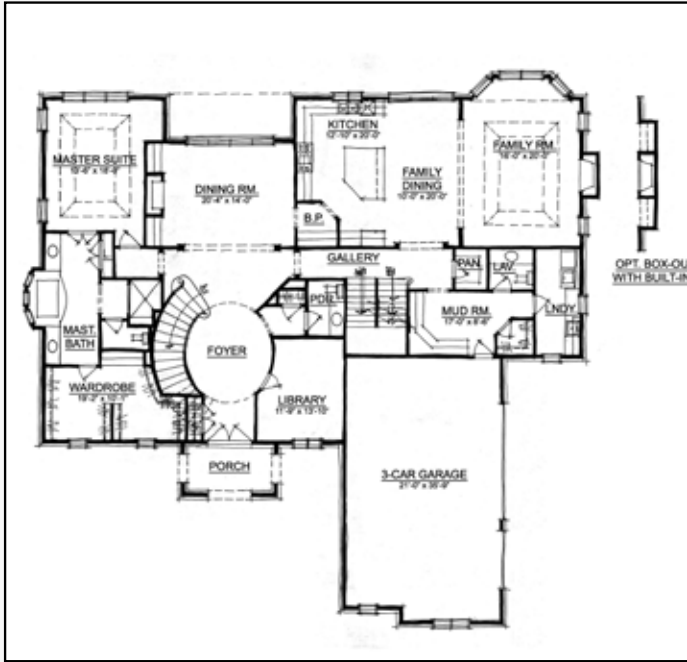
## Bartholomew

This traditional English home has style that's loved the world over. With a main floor master, 5 bedroomd, 5 full baths and 2 half baths, finished lower level and 3-car garage, this home is contemporary yet has the quintessential British look.

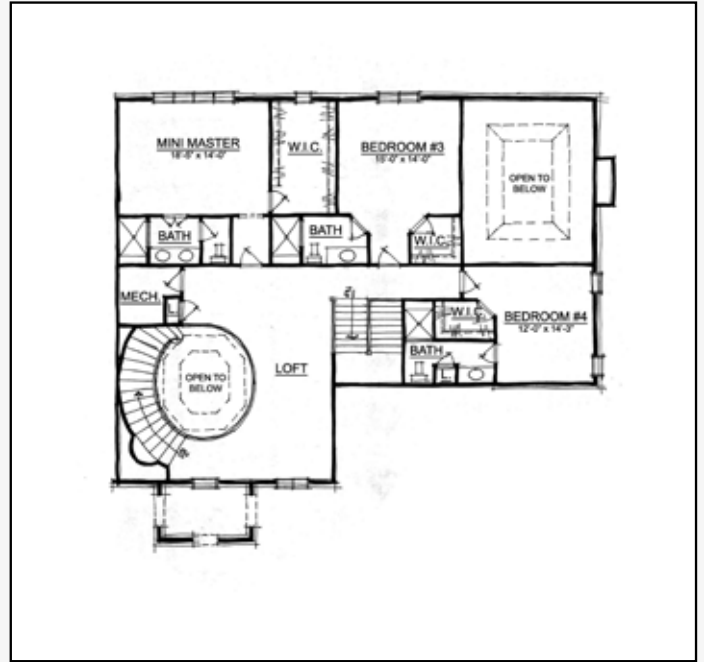
Plan #	Sq Ft.	Master	Price
9090	4871	Main	\$775000-850000

The Bartholomew is part of our Architectural Gallery. These plans offer an impressive array of custom designs for those who want a low-maintenance lifestyle that includes luxury features and amenities that add enduring value to your home.





Main Level



Upper Level

# Bartholomew

**Plan Number:** 9090

**Price:** \$775000-850000

**Square Feet:** 4871

**Master Bedroom:** Main

**Beds:** 5

**Full Baths:** 5

**1/2 Baths:** 2

**Lower Level:** Finished

**Garage:** 3

## LOWER LEVEL

This home is built with a completely finished lower level with 10 ft. ceilings and individualized custom designs and features.

Lower Level

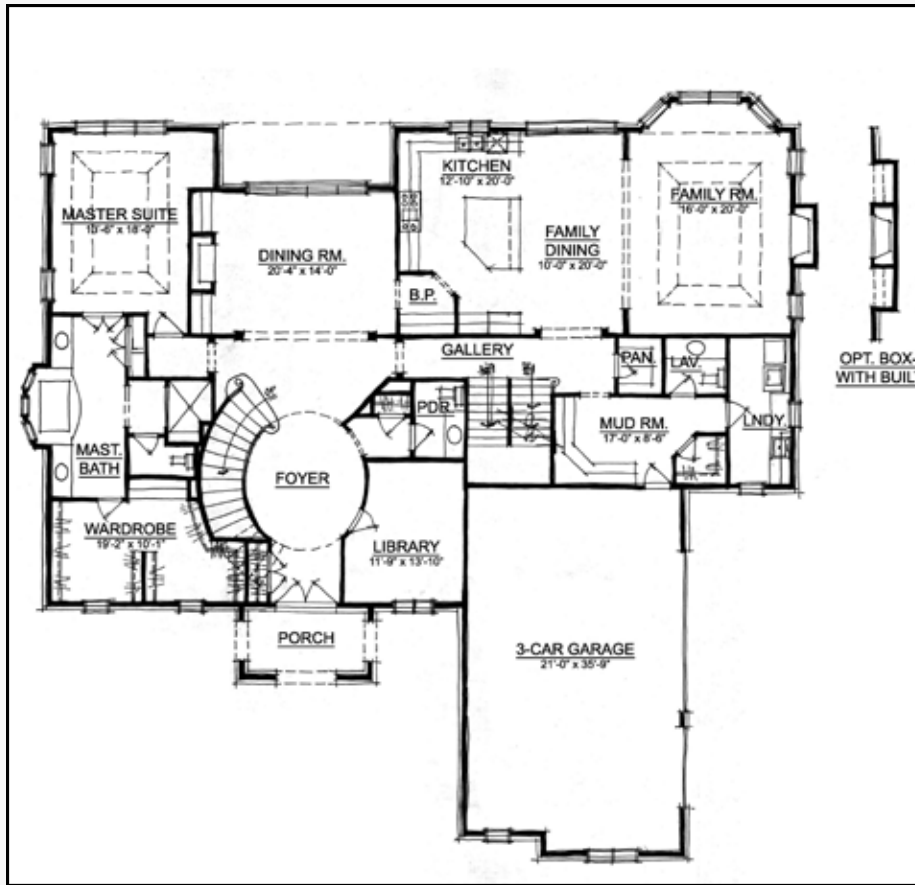
In our continuing effort to meet homebuyer's expectations, we reserve the right to modify features, price, specifications and/or to change or discontinue models without notice or obligation. Floor plan dimensions are approximate. Room dimensions do not include optional bays or box-outs. Floor plan shown may vary from actual home. Ceiling designs vary per elevation. Copyright 2013.



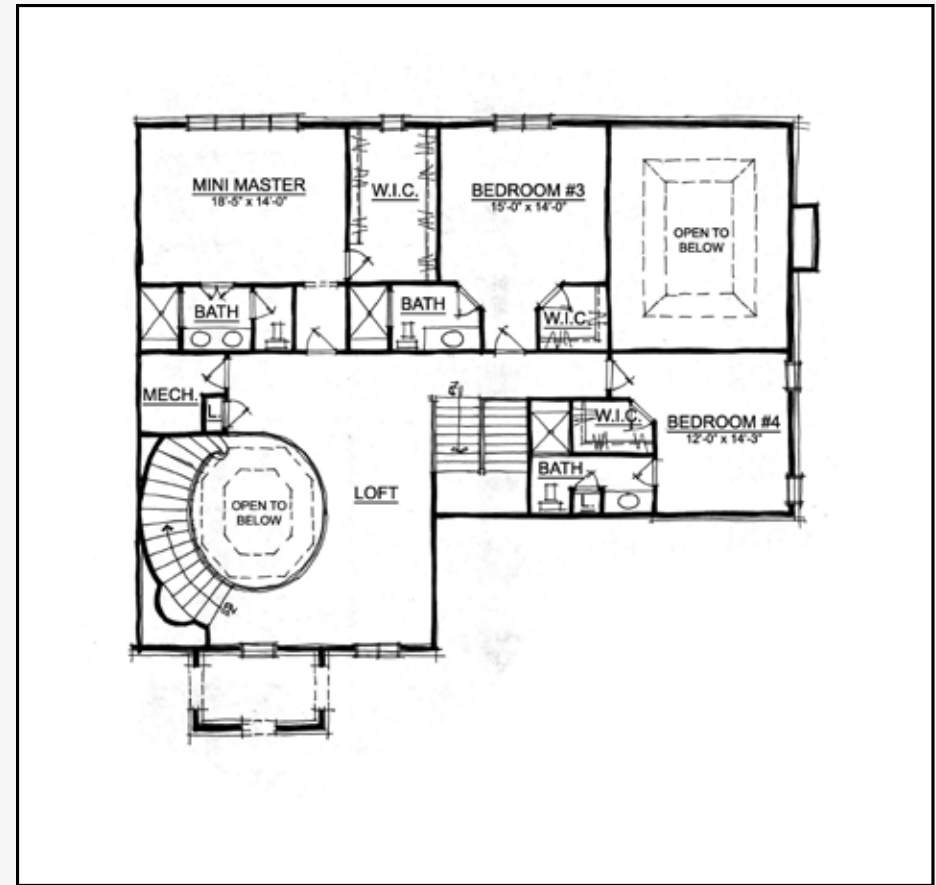
CUSTOM GALLERIES

12965 Old Meridian Street  
 Carmel, IN 46032  
 317.582.2464  
 www.estrledge.com

# Bartholomew



Main Level



Upper Level

