



CUSTOM GALLERIES

Architectural



Angola

This stately home emulates the manors found across the English countryside. The 5 and 6 bedrooms, 3 to 4 full baths, finished lower level and a 3- or 4-car garage provides all the modern variation to adapt to the way you live.

Plan #	Sq Ft.	Master	Price
9050	4275	Upper	\$595000-675000

The Angola is part of our Architectural Gallery. These plans offer an impressive array of custom designs for those who want a low-maintenance lifestyle that includes luxury features and amenities that add enduring value to your home.





Main Level



Upper Level

Angola

Plan Number: 9050

Price: \$595000-675000

Square Feet: 4275

Master Bedroom: Upper

Beds: 5-6

Full Baths: 3-4

1/2 Baths: 1

Lower Level: Finished

Garage: 3-4

LOWER LEVEL

This home is built with a completely finished lower level with 10 ft. ceilings and individualized custom designs and features.

Lower Level

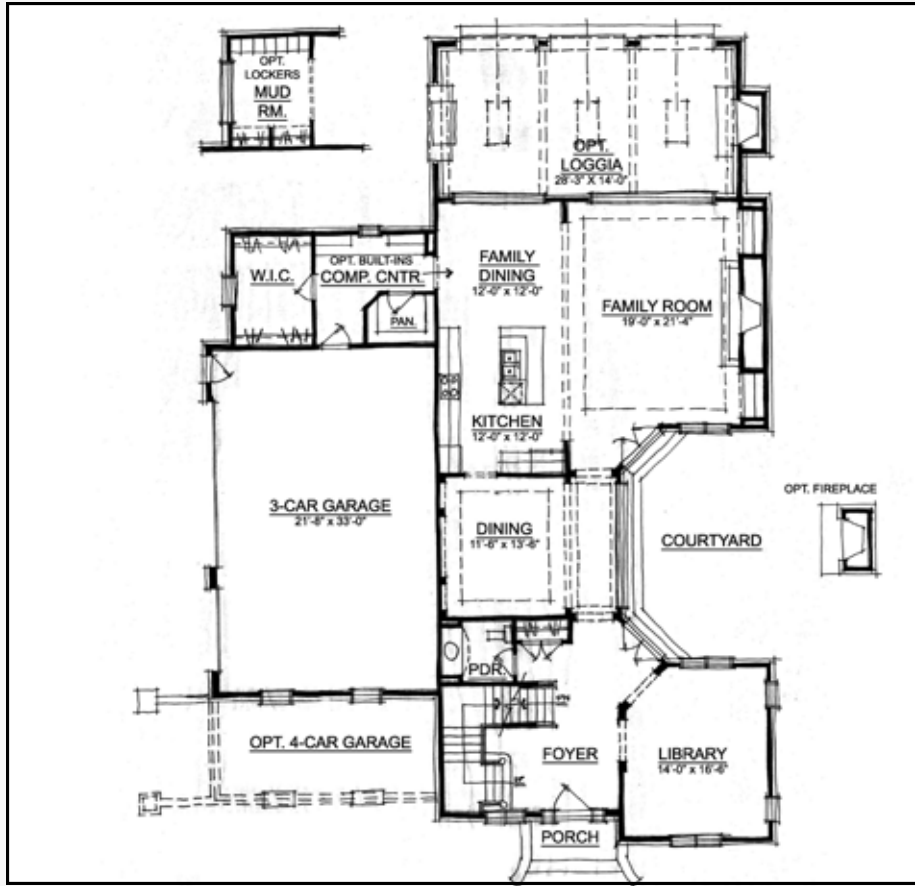
In our continuing effort to meet homebuyer's expectations, we reserve the right to modify features, price, specifications and/or to change or discontinue models without notice or obligation. Floor plan dimensions are approximate. Room dimensions do not include optional bays or box-outs. Floor plan shown may vary from actual home. Ceiling designs vary per elevation. Copyright 2013.



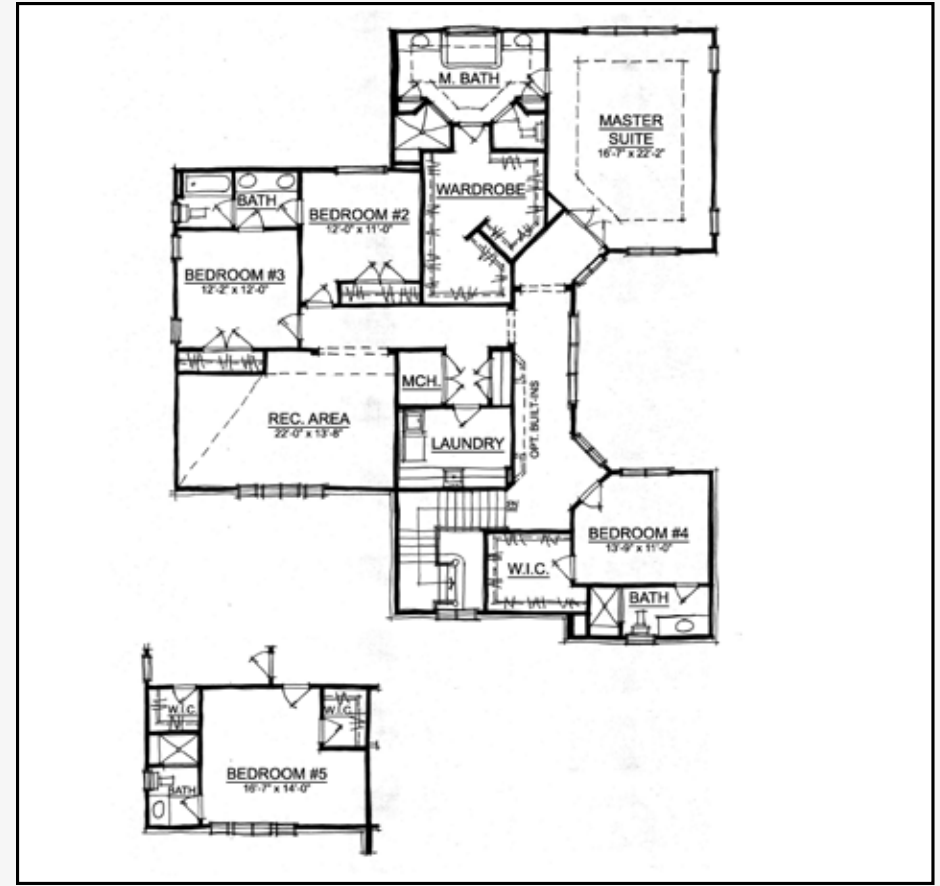
CUSTOM GALLERIES

12965 Old Meridian Street
 Carmel, IN 46032
 317.582.2464
 www.estrledge.com

Angola



Main Level



Upper Level

