



The Kirtling

MERIDIAN GALLERY

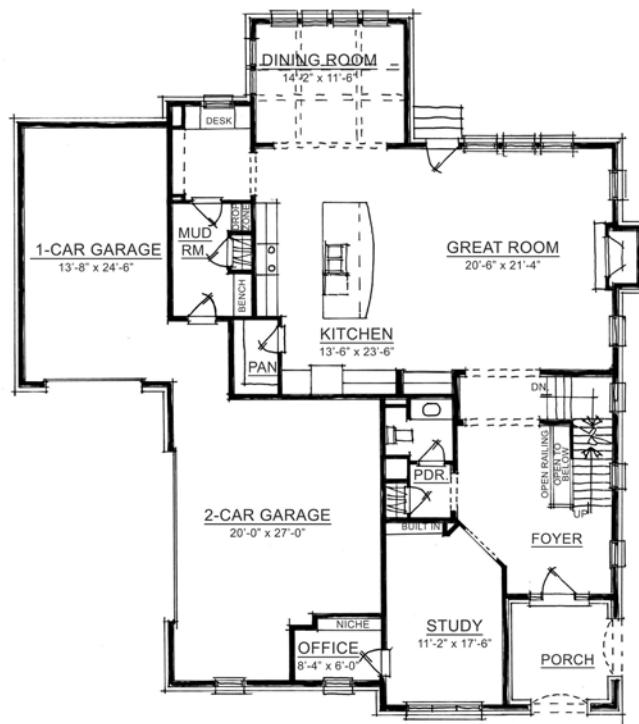
Plan 7055C	3,900 sqft.*
4 or 5 bedrooms	3 or 4 and a half baths
3 car garage	Finished lower level

*Square footage includes lower level. The artistic renderings of floorplan and front elevation are subject to change. Refer to website for most up-to-date information. ©2016 Estridge Homes | www.estrIDGE.com

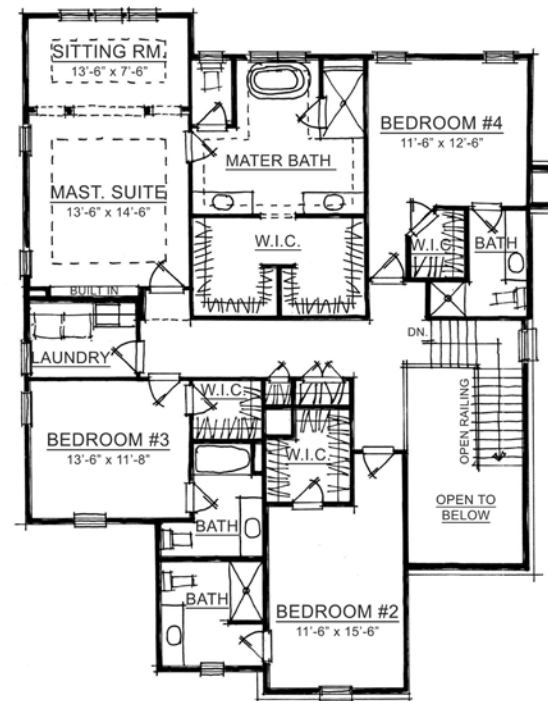
The Kirtling

MERIDIAN GALLERY

Plan 7055C • 3,900 sqft.* • 4 or 5 bedrooms
3 or 4 and a half baths • 3 car garage



Main Level



Upper Level

This home is built with a completely finished lower level with 10 ft. ceilings and individualized custom designs and features.



*Square footage includes lower level. The artistic renderings of floorplan and front elevation are subject to change. Refer to website for most up-to-date information. ©2016 Estridge Homes

For more information visit us at:

estridge.com

Rev. 11/28/16