



The Benton

MERIDIAN GALLERY

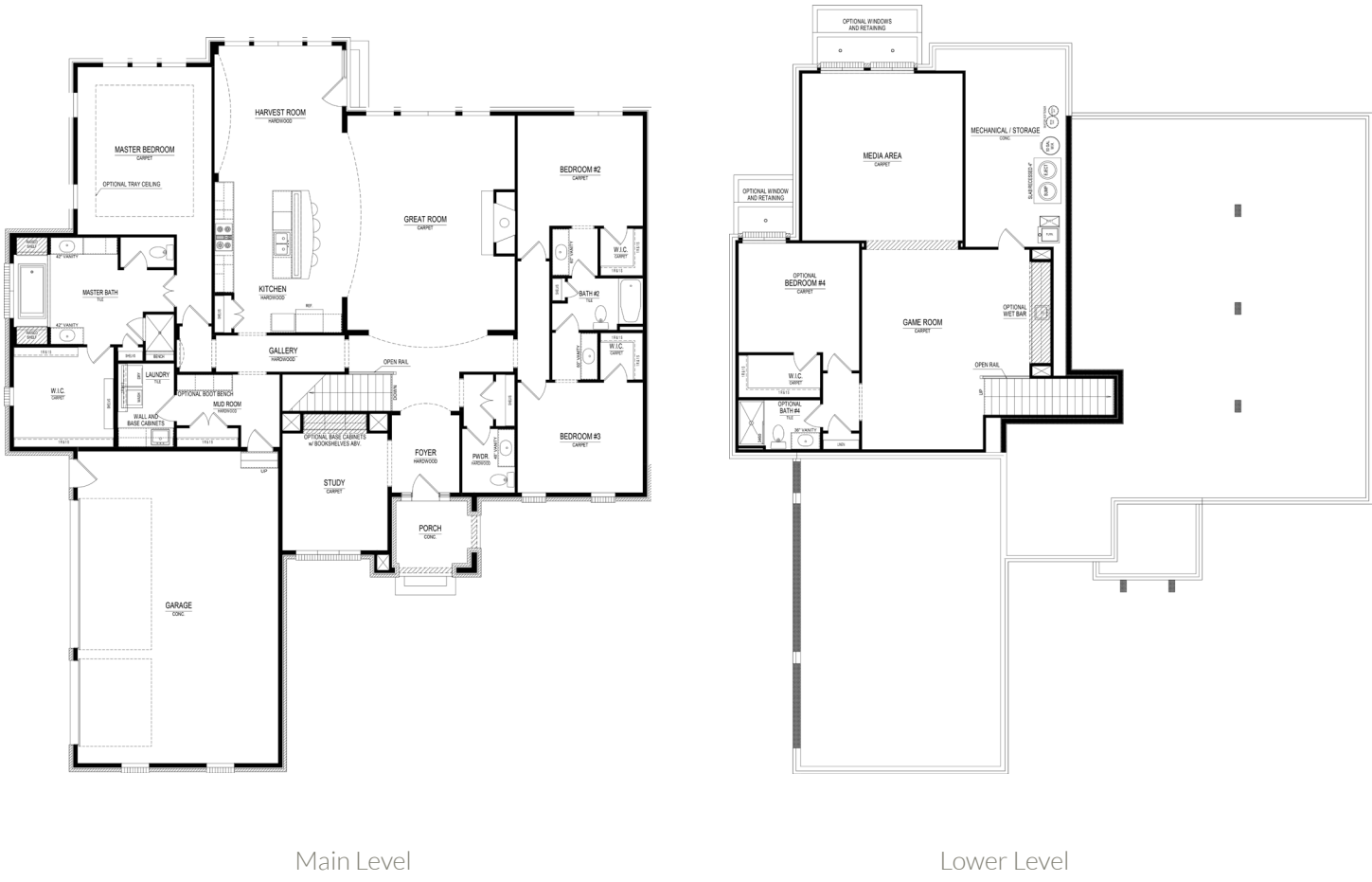
Plan 7020A	4,141 sqft.*
3 bedrooms	2 and a half baths
3 car garage	Finished lower level

*Square footage includes lower level. The artistic renderings of floorplan and front elevation are subject to change. Refer to website for most up-to-date information. ©2016 Estridge Homes | www.estrIDGE.com

The Benton

MERIDIAN GALLERY

Plan 7020A • 4,141 sqft.* • 3 bedrooms
2 and a half baths • 3 car garage



This home is built with a finished lower level with 10 ft. ceilings and individualized custom designs and features.



*Square footage includes lower level. The artistic renderings of floorplan and front elevation are subject to change. Refer to website for most up-to-date information. ©2016 Estridge Homes

For more information visit us at:

estridge.com

Rev.01/27/17